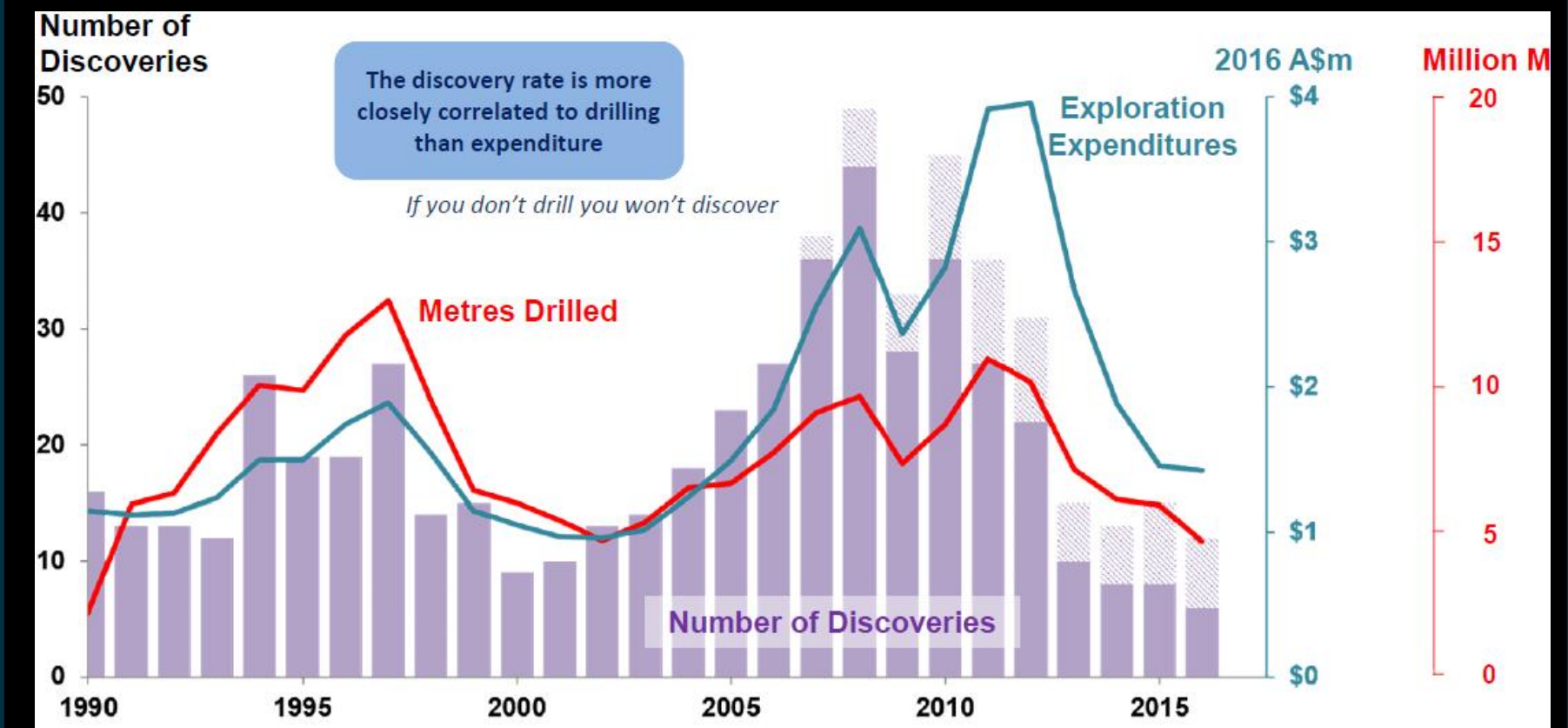
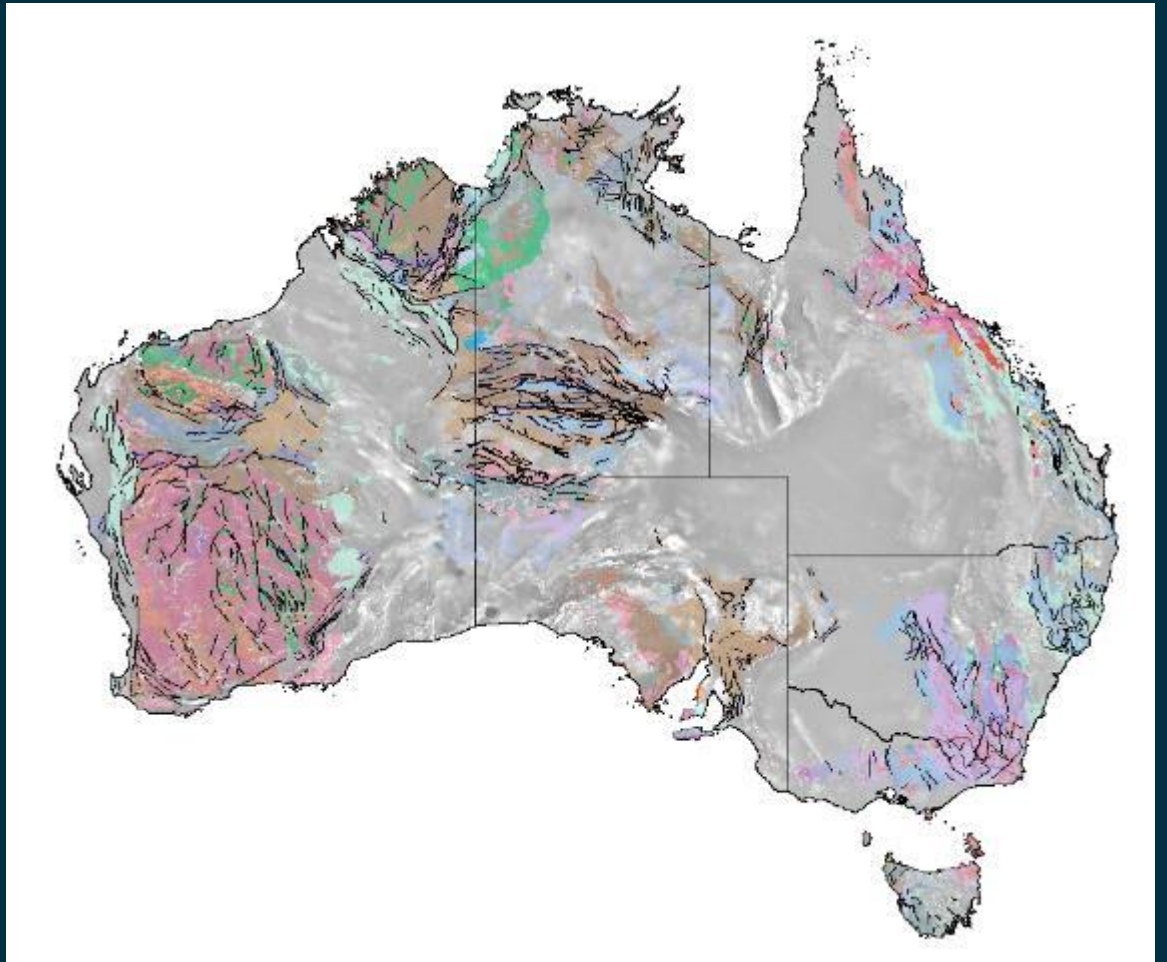


The New Mineral Exploration Cooperative Research Centre

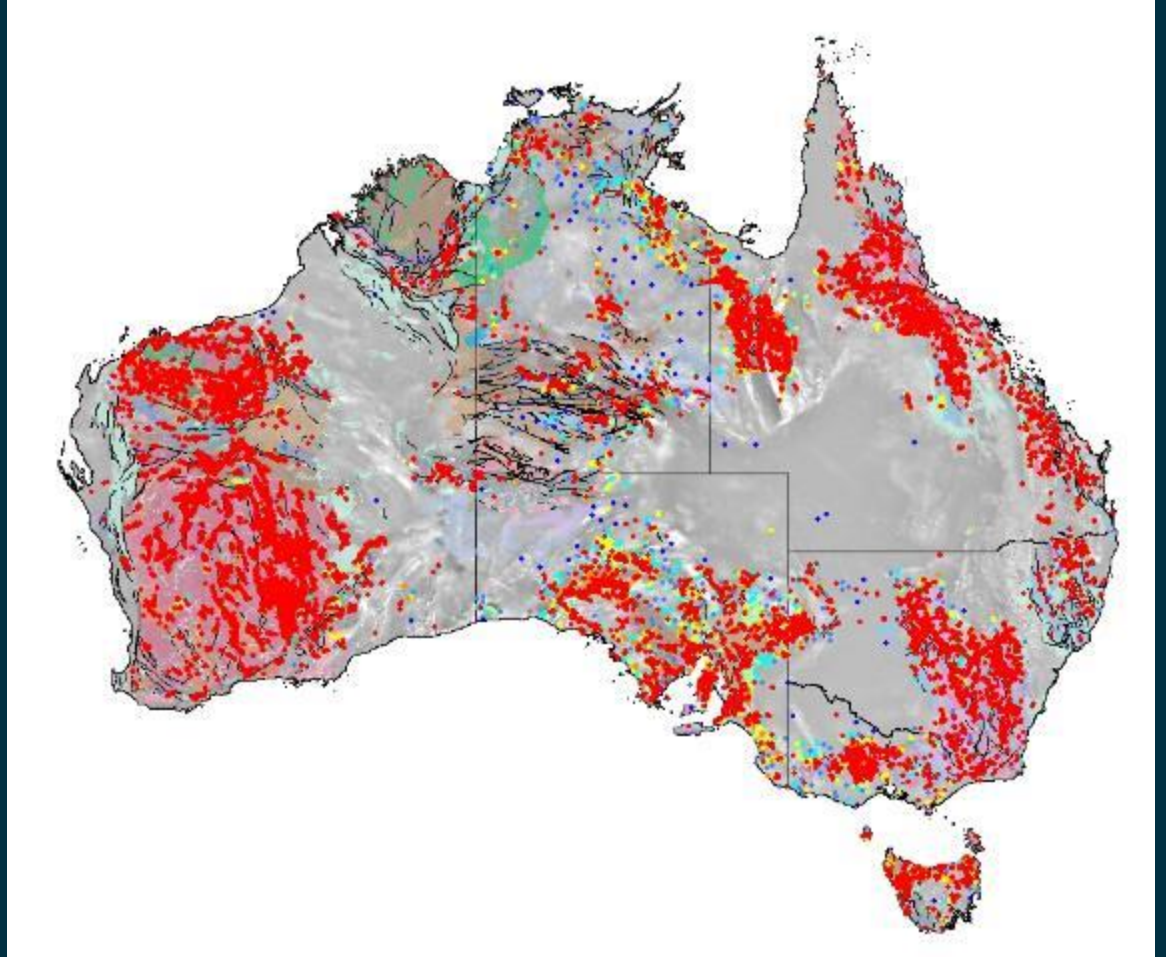
Dr. Chris Pigram
Chairman
MinEx CRC



**Prospective rocks
continue under
cover**



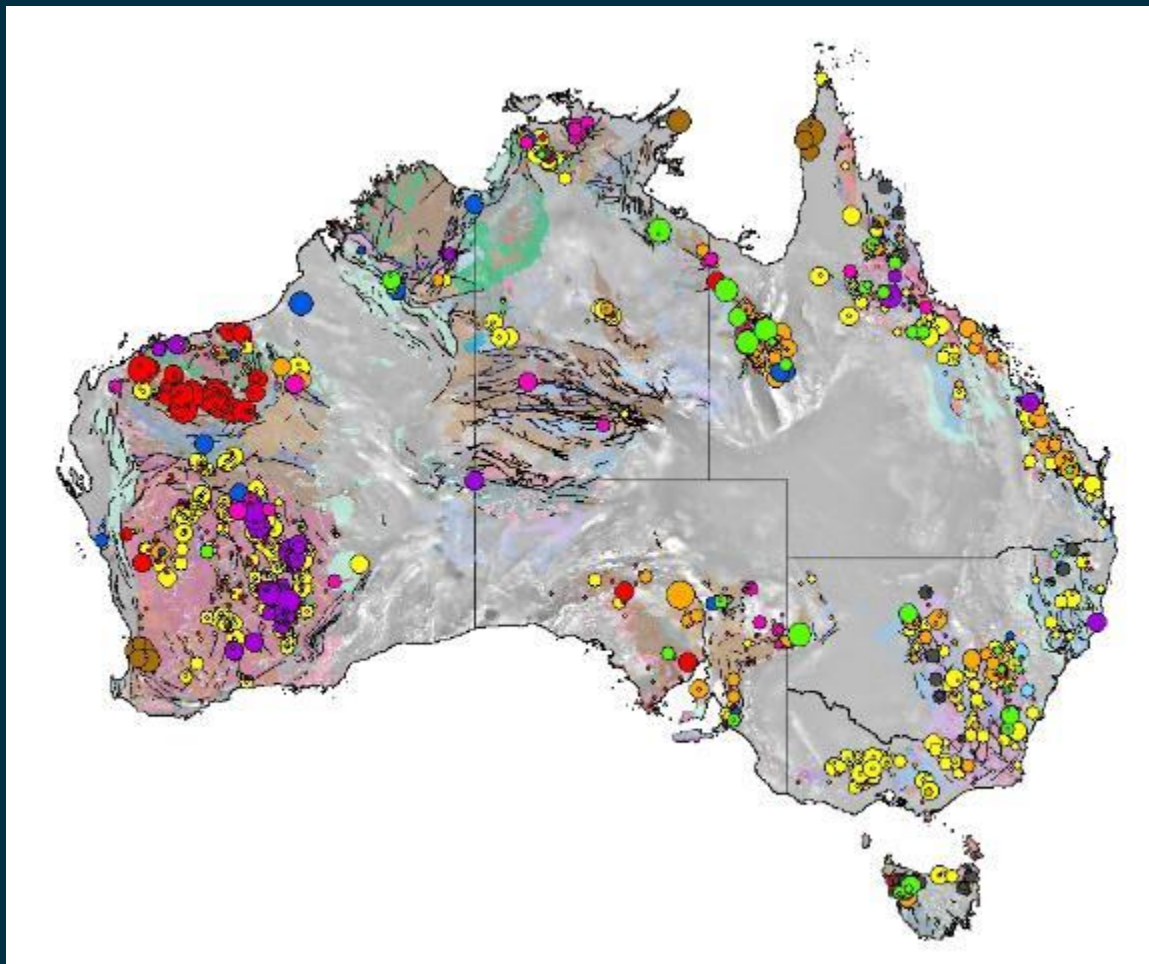
**We have only
explored the
exposed provinces**



Open file drilling

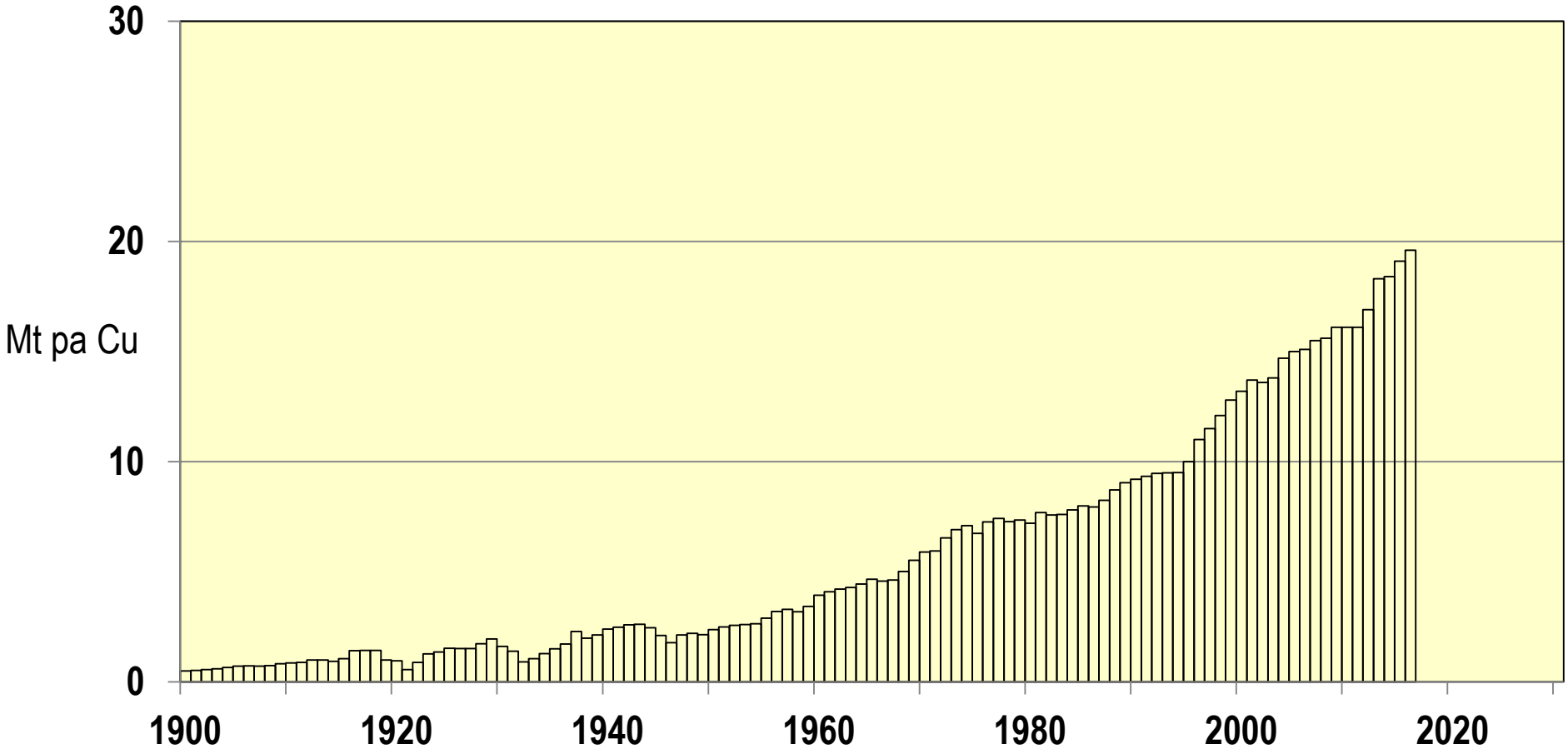
Coloured for proximity to nearest neighbour

**Where we drill we
discover!**

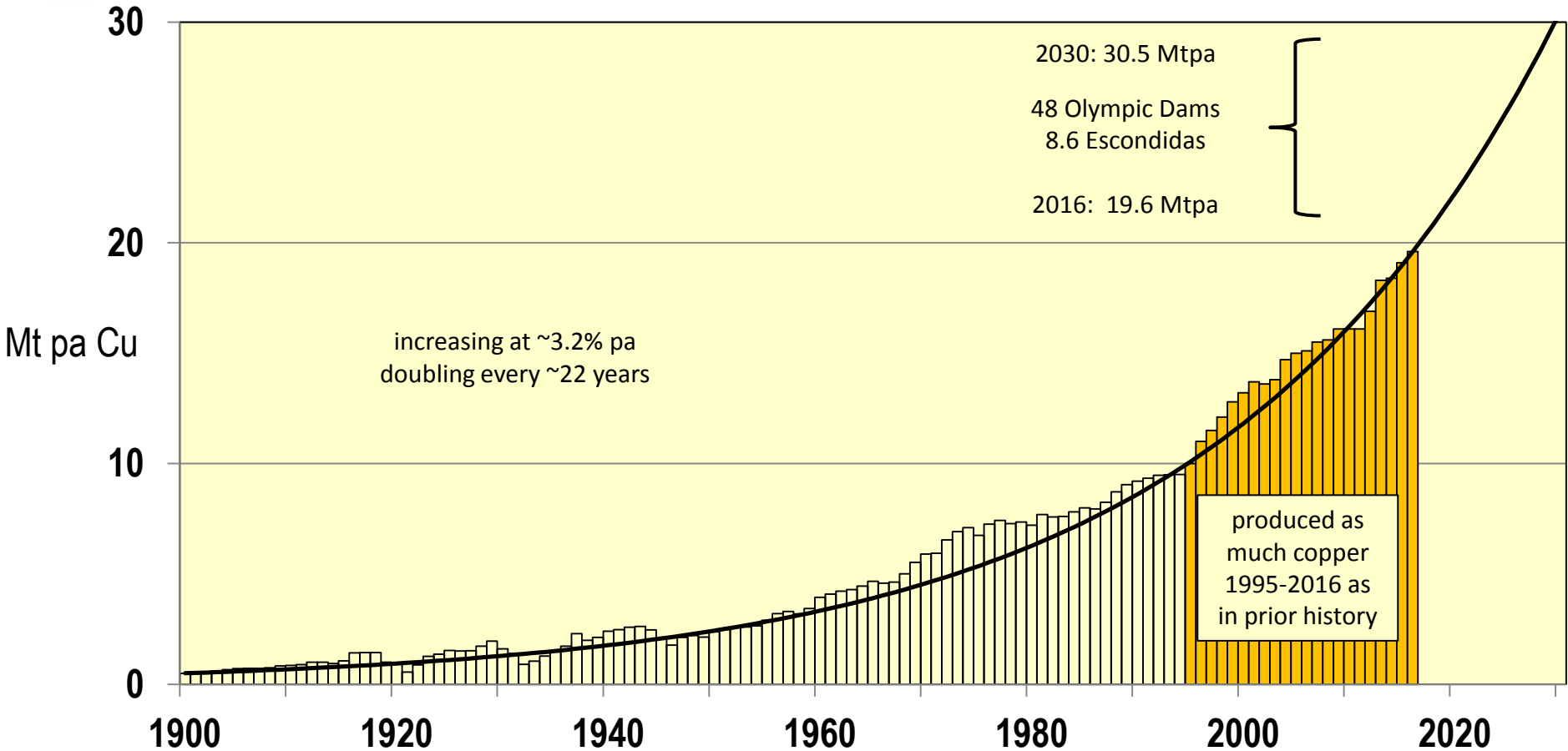


Known mineral deposits
By size and commodity

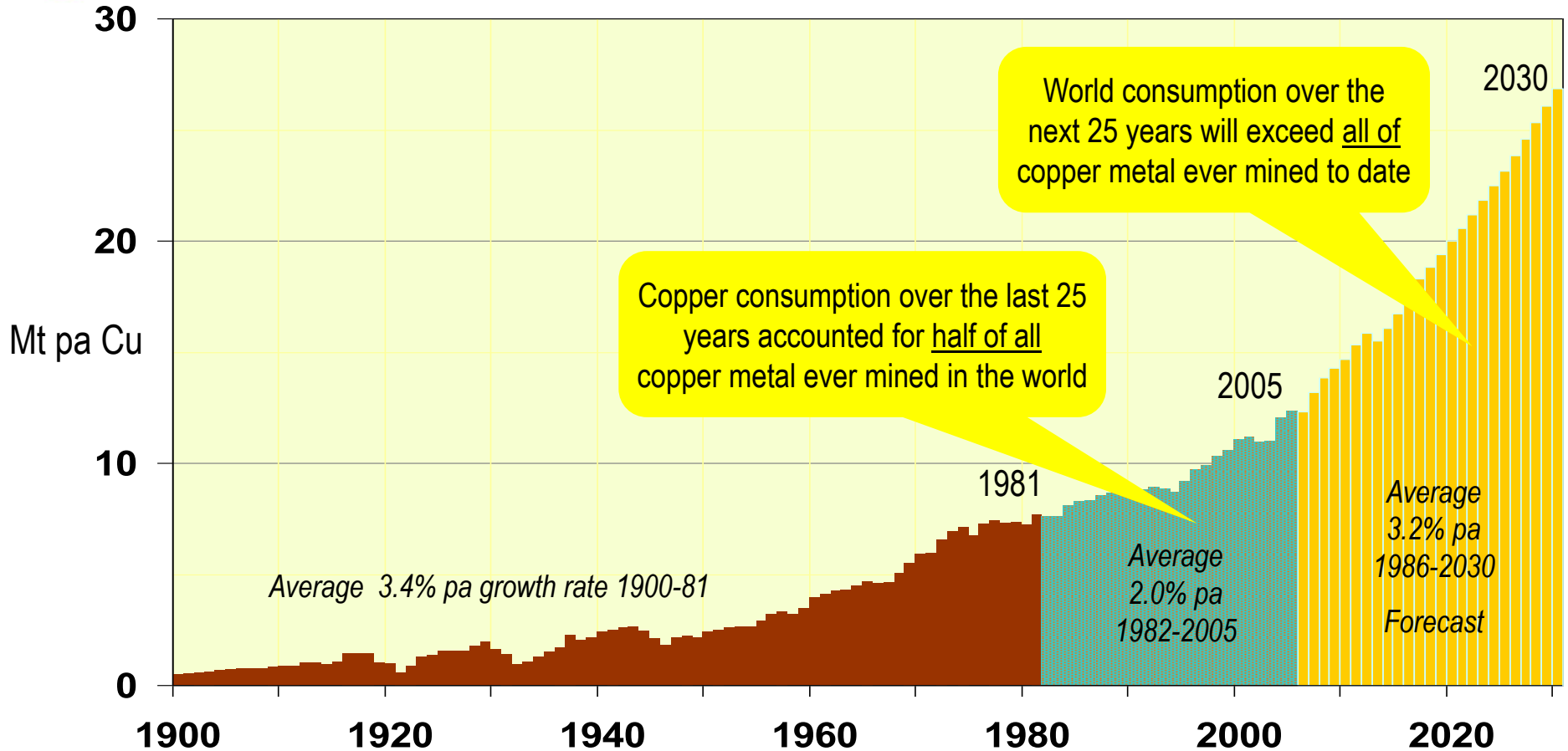
Global Copper Production

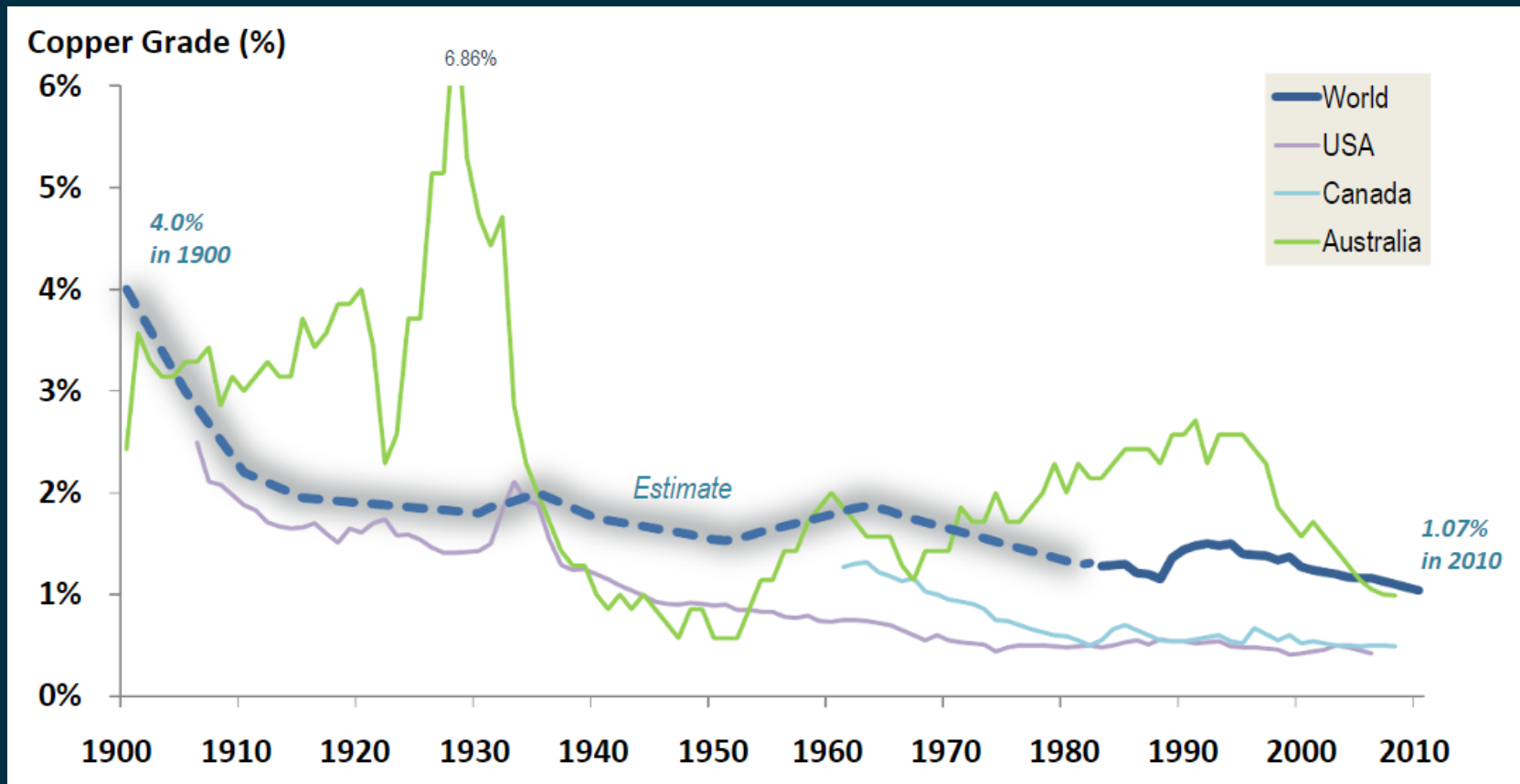


Global Copper Production



Global Copper Production





Industry Led Agenda

- More efficient drilling technologies to drill more holes
- Collect and interrogate data while drilling to inform decisions
- Drilling deployments to optimise technologies and uncover new mineral provinces



Broad base, significant size

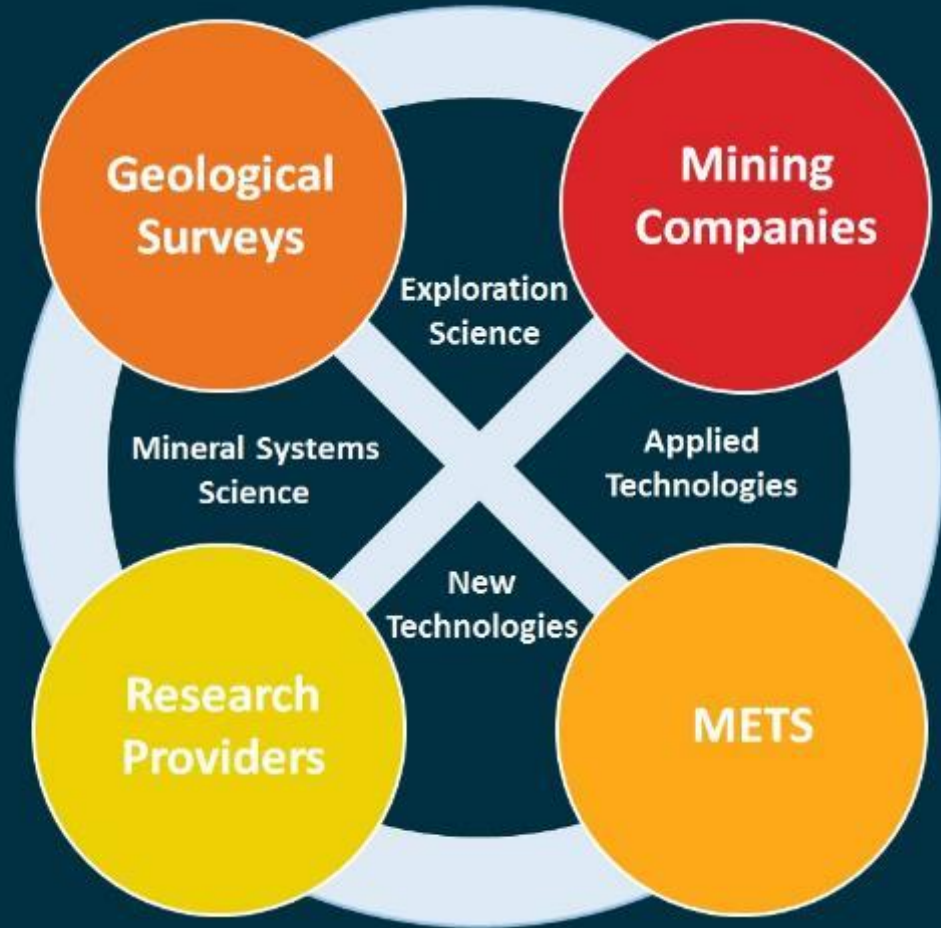
33 Participants contributing:

- \$41.1M cash
- \$49.2M non-staff in-kind
- 311 FTE (\$77.6M equivalent)

\$50.0M CRC Program funding*



MinEx CRC Internal Stakeholders



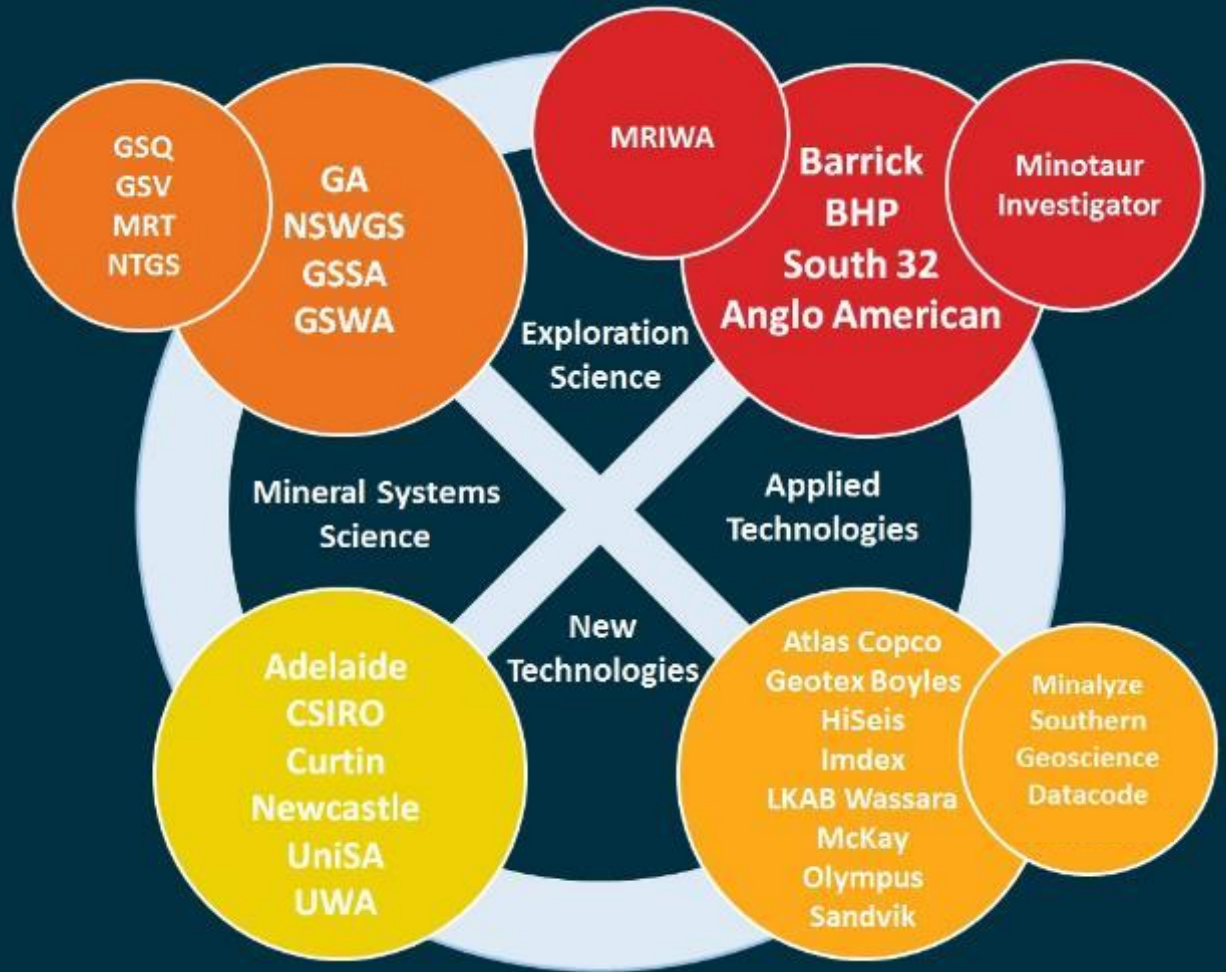
Majors, Mets and Survey Participants (16)





Research Participants and Affiliates (16)

Participants and Affiliates



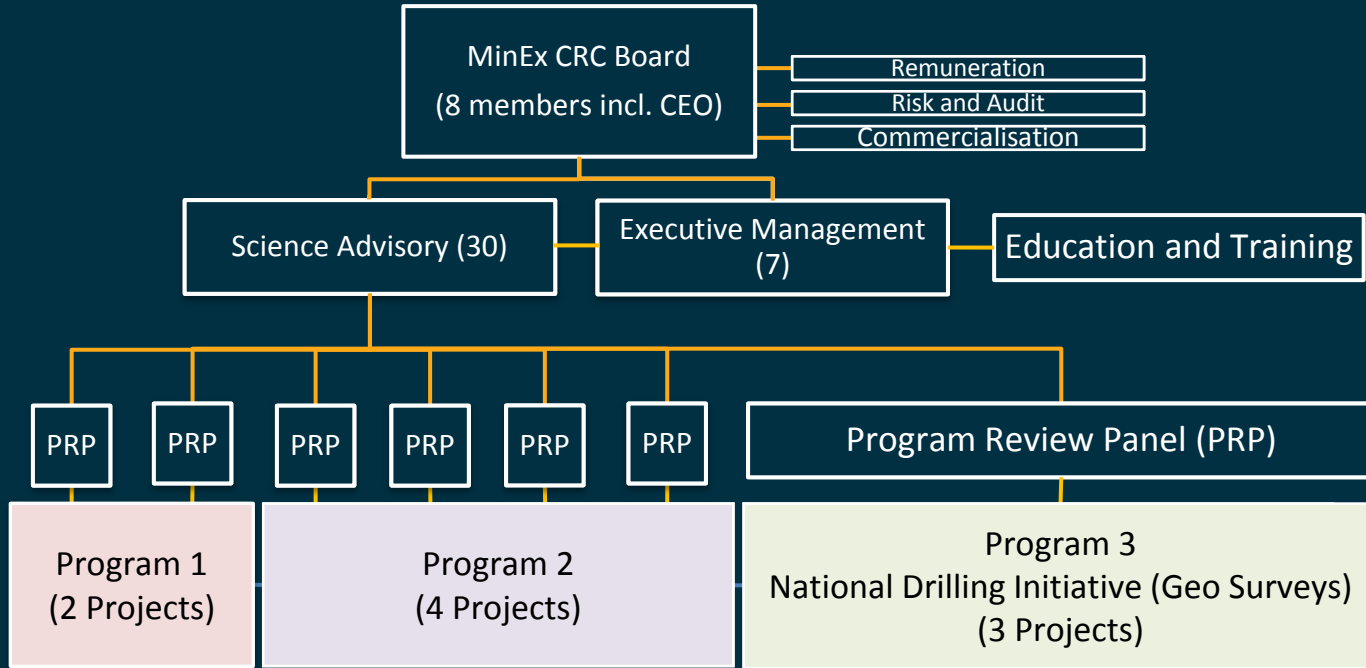
Providing for the Future

Unique mix of Post grad training and Vocational & Educational Training (VET)

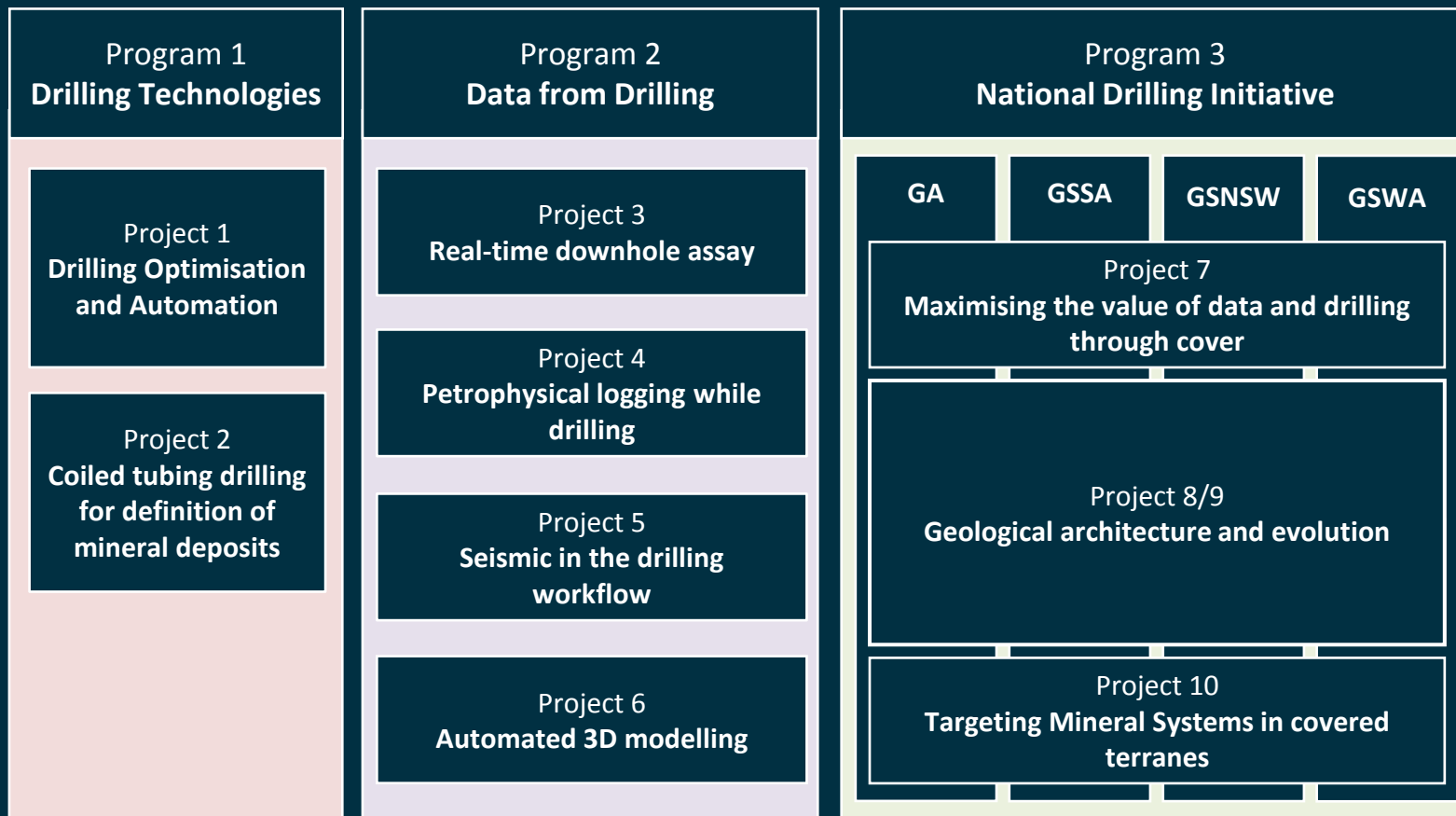
- 50 PhD's
- 200 VET
- 7.5% of budget



Governance and Structure



Programs and Projects



New Technology

CT rig video

Budget Summary

Head Office (\$1.25Mpa):	\$12.5M
Opportunity Fund (7.5% CRC Prog. Funds)	\$3.75M
Education (7.5% CRC Prog. Funds)	\$3.75M
Drilling and Program Co-ordination	\$2.5M
<hr/>	
TOTAL CENTRAL COSTS	\$22.5M
Balance for Programs	\$68.6M

10-Year Goals

- Australia re-established as the preferred destination for mineral exploration investment
- METS sector thriving taking uncover exploration tools and techniques to the world
- Next generation of professionals and drilling experts trained



minexcrc.com.au

 Find us on LinkedIn

For Program 1 and 2

Participants nominate involvement at \$500K per project

Minimum 4 projects for major miner, no minimum for METS

CRC Program cash leveraged @ 71% of participants cash

Projects budgeted over 9 years (3 x 3 year projects) aiming to commenced 1 Jan 2019

For the NDI (Program 3)

GA, GSSA, GSNSW, GSWA and GSV contribute **\$23.5M**
Managed by the surveys in “NDI Implementation Projects”

CRC Programme cash leveraged into “NDI Research Projects”
@ 71% participants cash = **\$16.7M**

Research projects budgeted over 9 years (3 x 3 year projects)
aiming to commenced 1 Jan 2019

Annual budget of \$1.856 Mpa